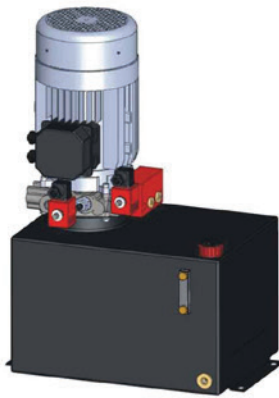
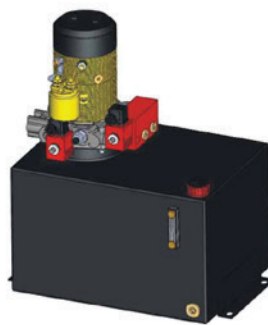


TYPICAL TYPE - AERIAL WORK PLATFORM

AC Motor



DC Motor



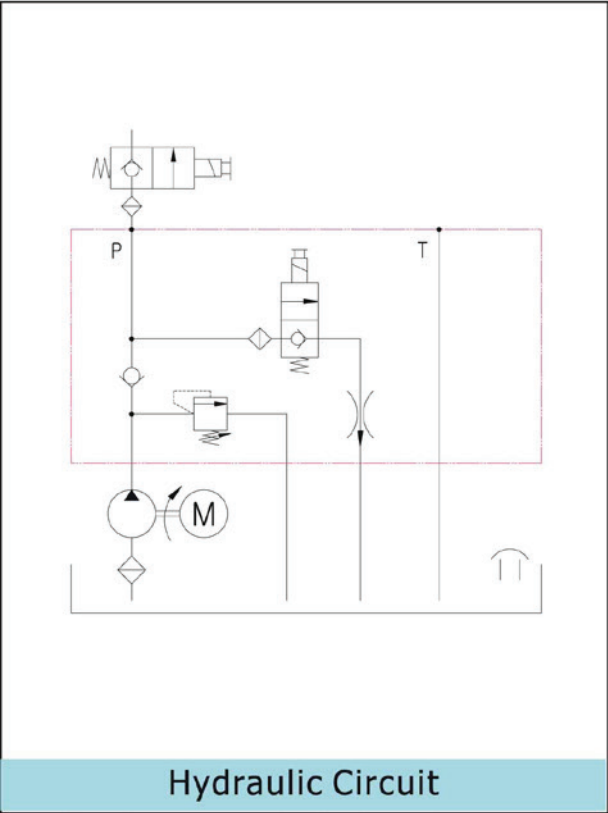
Description

Designed for use on 12V DC, 24V DC and AC operated.

Elevated work platform using a raise-hold & gravity down circuit includes.

Normally close valve to protect operators from run-on, Manual override to allow the platform to be lowered in case of power failure.

Power Pack for *Aerial Work Platform*

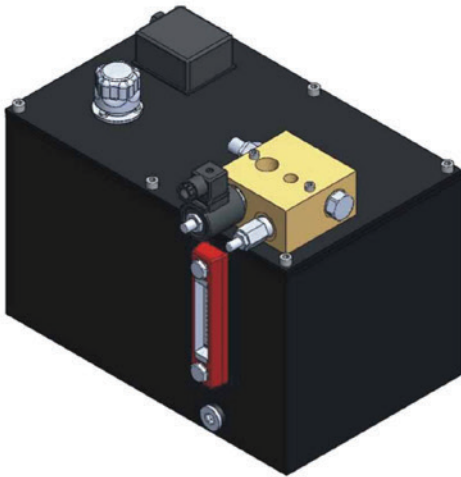


Hydraulic Circuit



Application - *Aerial Work Platform*

TYPICAL TYPE - PLATFORM MAN LIFT



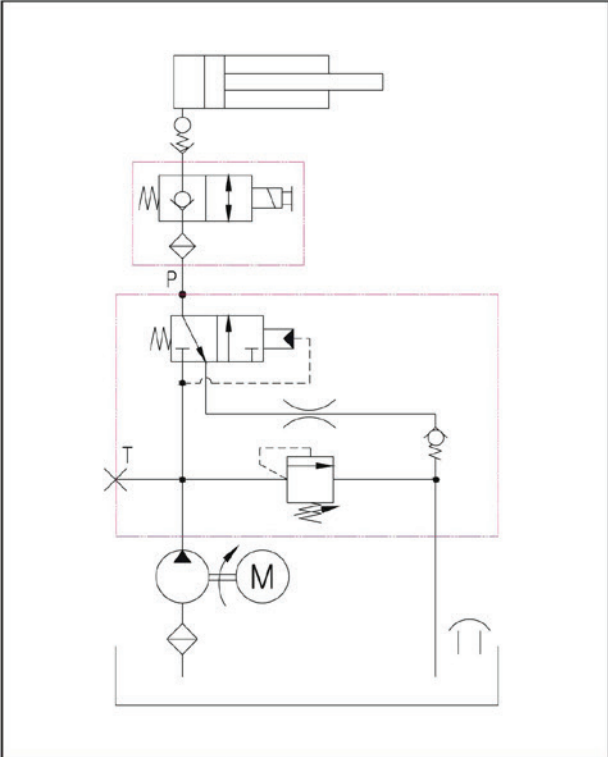
Description

Hydro-Tek designed submersible power unit for any of application in AC motor.

Quiet and clean work place need submersible power unit.

Three phase AC motor is provided. For DC motor power unit, please contact Hydro-Tek.

Submersed Power Pack for *Platform Man Lift*



Hydraulic Circuit



Application - *Platform Man Lift*